



10558 Somerset Pike, Somerset, PA 15501 USA

To be removed from our mailing list, email sales@jjbodies.com and provide the information on your mailing label, or call 800.777.2671.

Presort Std.
US Postage
PAID
Indiana, PA
Permit #12

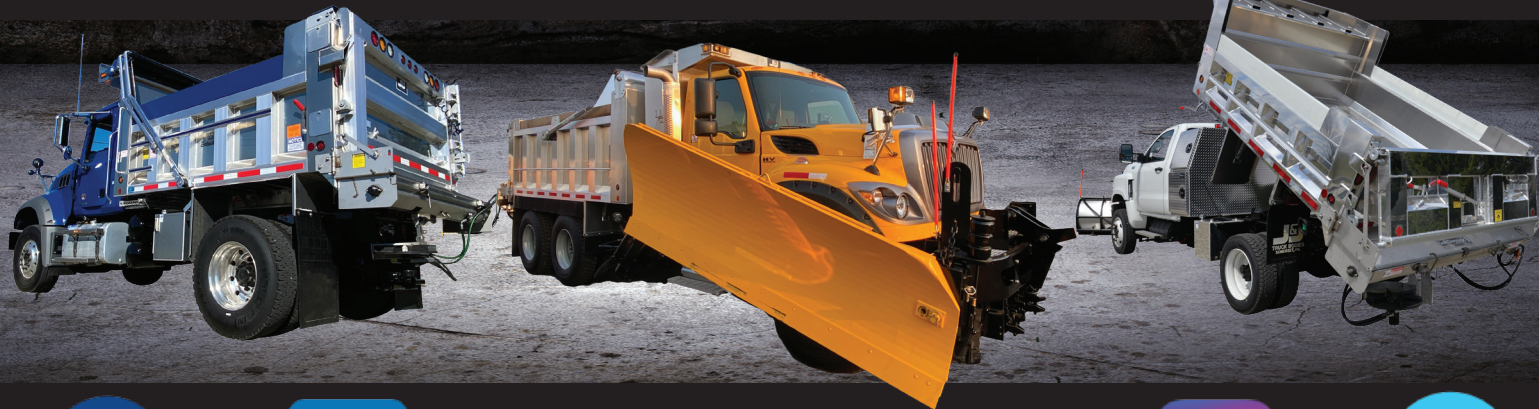
Go green, get us on your screen

Are you still interested in receiving the print edition of The Long Hauler? If not, we can send it directly to your inbox or remove your name from our mailing list. Simply contact us at tgontis@riggsind.com or 814-444-3584.



MORE THAN JUST A GREAT BODY...

From hydraulics to plows, spreaders, and pre-wet systems, we have your snow and ice solutions.



JJbodies J&J Truck Bodies



www.jjbodies.com

1-800-777-2671



JJtruckbodies JJbodies



The Long Hauler™

The Latest News from J&J • Volume XXII • Issue 3 2021



ARE YOU AT A CROSSROADS WHEN IT COMES TO **FLEET SOLUTIONS?**

TURN TO **J&J** FOR ALL OF YOUR NEEDS


Customer photos Page 2

What you need to do before winter Page 7

BUILT FOR THE LONG HAUL.®

MEET OUR TEAM

OUTSIDE SALES



Jason Cornell
jrc@jjbodies.com
Vice President of Sales
Territory: National
814.444.3425



Bob Hall
rbh@jjbodies.com
Territory: Western PA, OH, WV, Western NY
814.442.5967



Kevin Longchamp
kjl@jjbodies.com
Territory: Eastern PA and NY, NJ, New England
717.329.2271



Michael Schweitzer
mschweitzer@jjbodies.com
Territory: MD, Southern DE, Virginia, NC, SC
814.444.3563




Todd Imes
mti@jjtruckequipment.com
Territory: Truck equipment in Western PA, OH, WV, MD
814.521.7156



Nate Weaver
nhw@jjbodies.com
Territory: Truck equipment/municipal sales in East. PA, NJ, NY, CT, MA, North. DE
814.421.4386



Larry Faidley
ldf@jjbodies.com
Territory: Municipal / Government Sales
814.442.5164



Nolan Link
nlink@jjbodies.com
Territory: National trailer sales
814.444.3409

INSIDE SALES



Ed Lyons
ejl@jjbodies.com
814.444.3419



Vince O'Donnell
vpo@jjbodies.com
814.444.3413



Steven Stilley
sstilley@jjtruckequipment.com
814.444.7040



Quintin Wyandt
qmw@jjtruckequipment.com
814.444.7004

SALES ADMIN

PARTS


MARKETING



Leigh Snyder
ljs@jjbodies.com
814.444.3497



Kim Stenger
kas@jjtruckequipment.com
814.444.7039



Stephanie Mort
sjd@jjtruckequipment.com
814.444.7020



Eric Knopsnyder
eknopsnyder@riggsind.com
814.444.3452



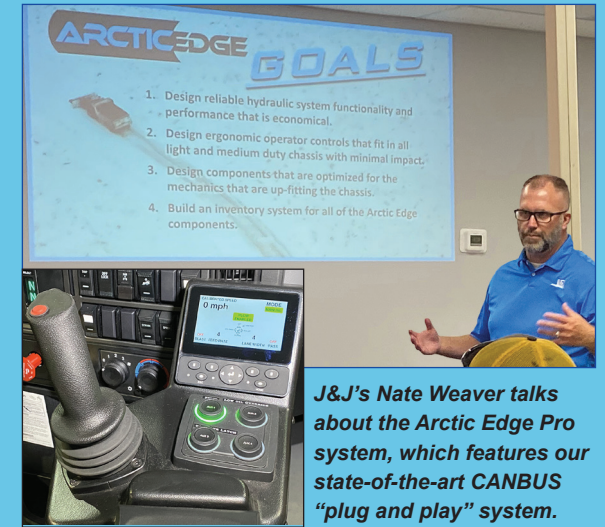
Taylor Gontis
tgontis@riggsind.com
814.444.3584

WINTER PREP GUIDE

We've got the edge on Old Man Winter

Having the right hydraulic system installed in your snowplow unit can make the harshest winter day feel like a day at the beach. J&J has spent years developing the Arctic Edge system, which is now available. The Arctic Edge PRO system features our state-of-the-art CAN-

BUS "plug and play" snow-and-ice control system. This robust design offers precision body, plow and spreader controls and features an industry-leading controls pedestal. The Arctic Edge includes a variety of options that can turn any light- or medium-duty truck into a snow-moving machine.



J&J's Nate Weaver talks about the Arctic Edge Pro system, which features our state-of-the-art CANBUS "plug and play" system.

Don't get left out in the cold!

The time to get ready for winter is BEFORE the snow starts flying! J&J can help outfit your fleet for whatever Mother Nature throws at us. Our experienced staff members can help you select the right dump body, plow, spreader or snow pusher.

Here's a helpful pre-season plow inspection checklist, courtesy of Boss:

- Change the hydraulic fluid.
- Grease the vertical pin (on v-plows) and other important wear points.
- Clean, inspect, and grease all electrical connections with dielectric grease.
- Check all fasteners for proper torque.
- Inspect all welds in plow structure and vehicle mount.
- Inspect the lights and properly adjust and align the plow lights.
- Inspect and re-torque all fasteners on the vehicle mount.
- Check the plow cylinders, hose, and pump for leaks.
- Tighten the trip and return springs.
- Make sure all plow functions work properly.



ON THE ROAD WITH J&J



62139

CR Crane Body

Raise your game a with telescopic crane and crane body installed by J&J Truck Equipment. With capacities ranging from 6,000 to 70,000 ft.-lb., they are designed to meet the needs of virtually every heavy equipment industry. Mounted on a light- or medium-duty chassis, J&J can make it fit your needs with a welder, compressor or generator.

MDC Medium-Duty Chassis

J&J's medium-duty dump bodies are ideally suited for municipal and commercial applications. They are an excellent choice for road maintenance, snow and ice control, and construction and landscaping applications. Depend on these versatile dump bodies to deliver years of hard work and reliable service.



33005



33059

MH Material Hauler

J&J's most popular model, the MH dump body, is the workhorse of coal and aggregate hauling. These precision-engineered bodies are built to specification and will withstand many years of hard service. It's lighter weight, corrosion resistant, and our No. 1 selling commercial dump body.



DO YOUR HAULING NEEDS HAVE YOU
GOING SIDEWAYS?
Get straightened out with trailer options from J&J

Orange you glad you bought a J&J?



Want to show off your J&J body? Submit it via our Facebook page or email it to tgontis@riggsind.com.

Tri-Boro Construction Supplies in Dallastown, Pa., submitted this gorgeous photo of a hard-working J&J Aluminum Material Hauler body shining in the early morning light of a job site. Mounted on a Mack GR64F, this 18-footer is Built for the Long Haul!

Looking sweet on a Pete!

When Peterbilt was looking to show the world its latest evolution of the 567 model dump truck, the Texas-based manufacturer turned to J&J for a custom-made Material Hauler Aluminum body. The truck was a familiar sight in Peterbilt's booth at trade shows this year, including the World of Concrete in Las Vegas.



★ Fleet Solutions ★ Are Where We Shine ★



Strategic consulting



Crane & Service

Crane and mechanic service bodies help cut maintenance costs, reduce man hours, and extend the life of your fleet's on-site equipment.



Dump Bodies

Your fleet can rely on J&J dump bodies to provide many years of service and hard work. They are precision-engineered and backed by 60+ years of workmanship and experience.



Aerial Lifts

Elevate your performance with an aerial lift from J&J. An articulated, telescopic or articulated telescopic lift allows all types of work to be carried out efficiently and safely.

Contract and project management



Rolloffs and Hooklifts

Build versatility into your fleet. One hooklift or rolloff can do the job of multiple trucks, saving you time and money.



Flatbeds

These versatile trucks — manufactured from aluminum or steel — are an important part of every fleet. At J&J, we can specify a standard flatbed package or customize a solution to fit your fleet's particular needs.

Service centers that span the U.S.



Lube Trucks

Service your on-site equipment with the lube trucks that are designed to keep your equipment working on the job site. Various tank capacities are available for housing oil, antifreeze, water, waste oil, and recovery systems.



Trailers

From the smallest job to the largest, we have the trailer to fit your needs, as we feature everything from steel pushouts to light-duty dumps and enclosed trailers.

www.jjbodies.com 800-777-2671